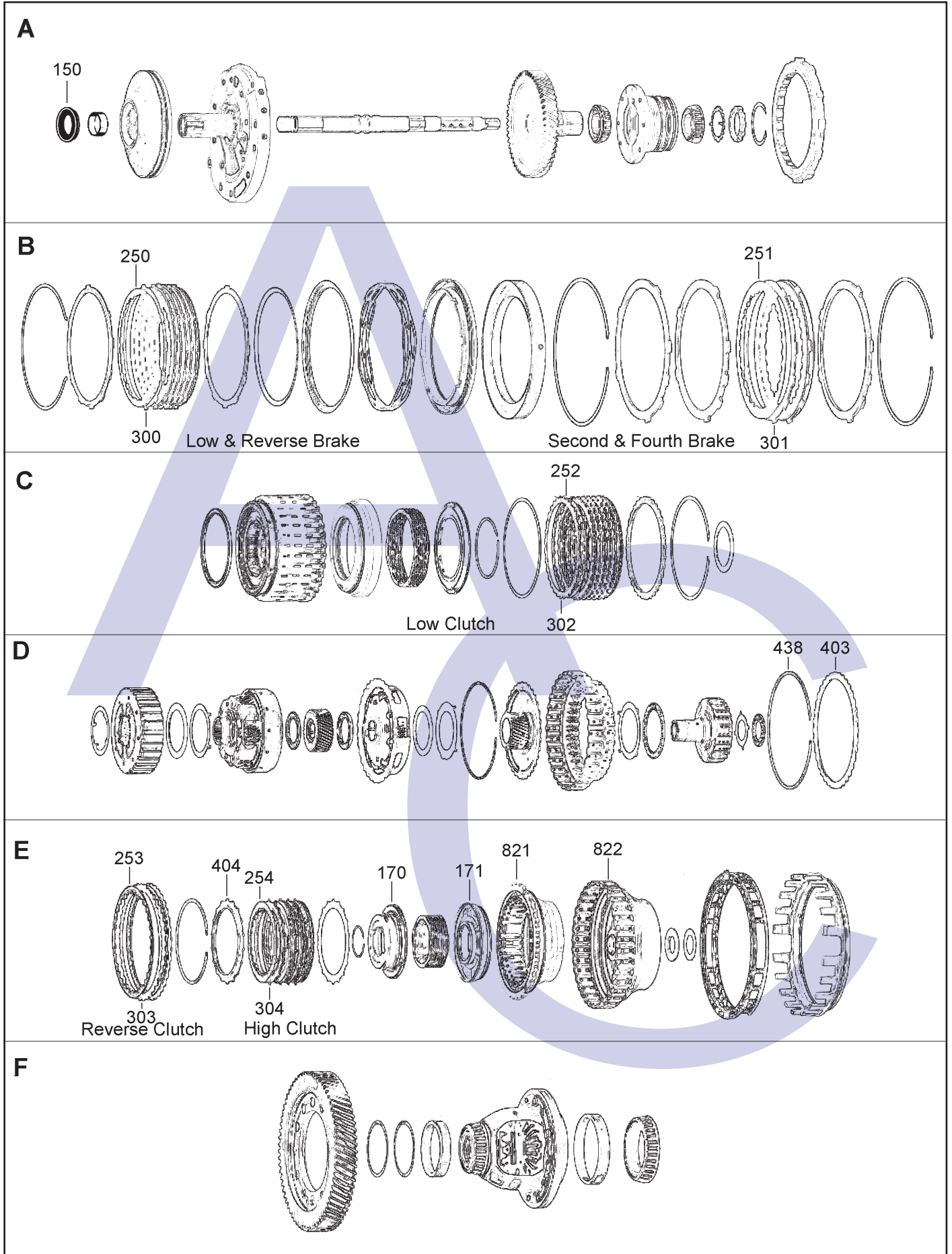
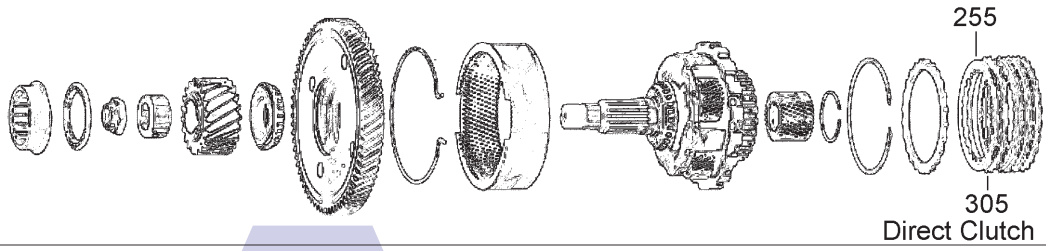


JATCO JF506E (Jaguar, Rover, Land Rover, Ford, Mazda, VW & Seat) 5 SPEED FWD (Electronic Control)

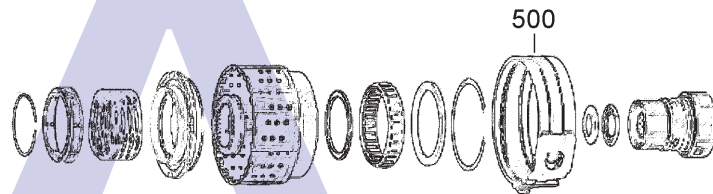


(Jaguar, Rover, Land Rover, Ford, Mazda, VW & Seat) **JATCO JF506E**
5 SPEED FWD (Electronic Control)

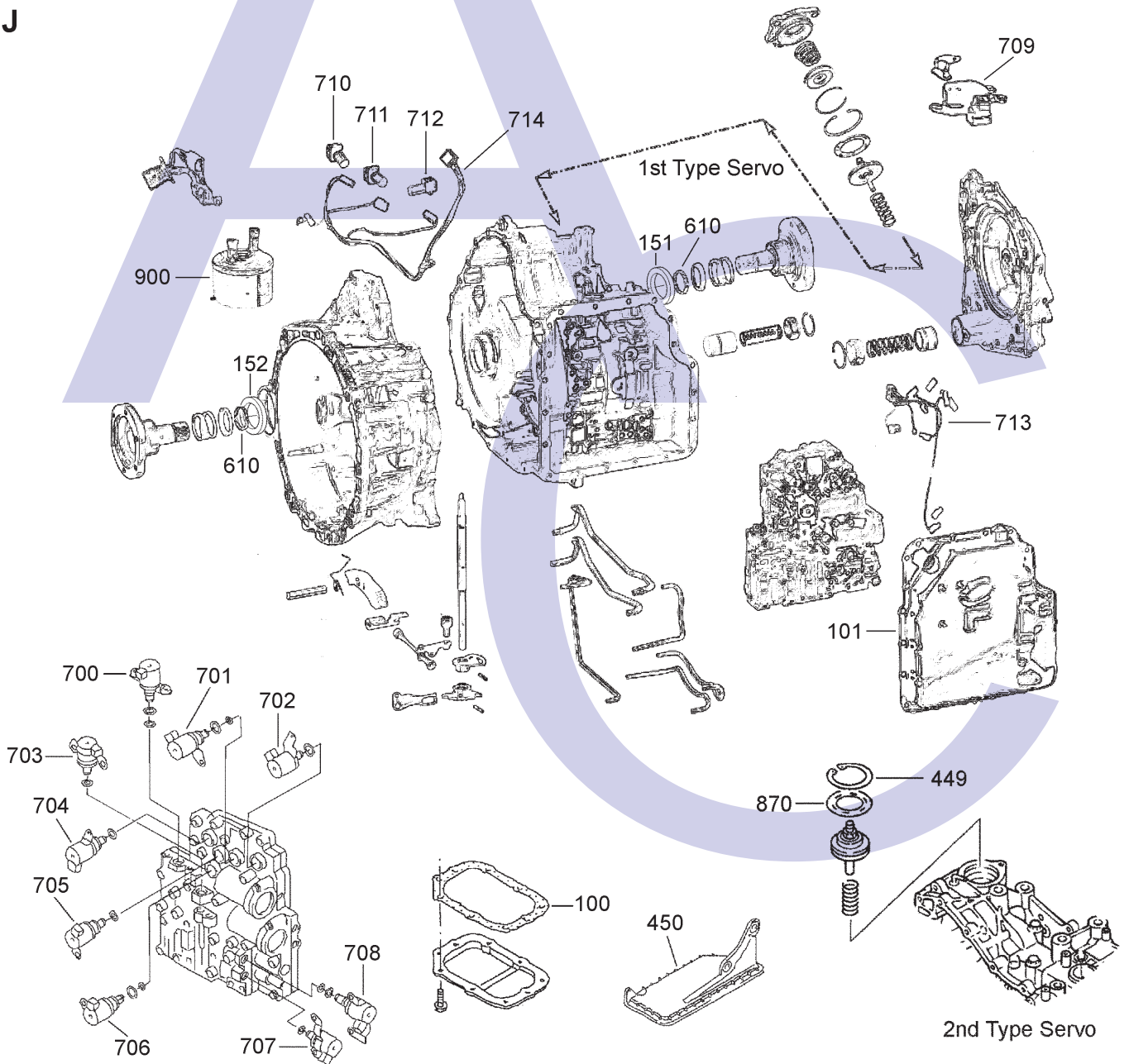
G



H



J



JATCO JF506E (Jaguar, Rover, Land Rover, Ford, Mazda, VW & Seat)

5 SPEED FWD (Electronic Control)

ILL NO.	DESCRIPTION	YEARS	QTY	PART NO
KITS				
Kit	Overhaul (Transtec) Except Golf/Bora/Galaxy (W/O Pistons)	00-ON	1	JF506E.OHK01
Kit	Overhaul (Transtec) Golf/Bora/Galaxy (W/O Pistons)	02-ON	1	JF506E.OHK02
Kit	Overhaul (Precision)	00-ON	1	JF506E.OHK03
Kit	Overhaul (Rover OEM) (Without Gaskets)	00-ON	1	JF506E.OHK10
Kit	Overhaul (Mazda OEM) (Without Gaskets)	00-ON	1	JF506E.OHK11
Kit	Overhaul (Ford OEM) (Without Gaskets)	00-ON	1	JF506E.OHK12
Kit	Overhaul (Jaguar OEM) (Without Gaskets)	00-ON	1	JF506E.OHK13
Kit	Seal Kit, High Clutch (Precision)	00-ON	1	JF506E.ORK01
Kit	Seal Kit, Overrun Clutch (Precision)	00-ON	1	JF506E.ORK02
GASKETS				
100J	Pan Gasket (Galaxy)	4/00-ON	1	JF506E.GAS01
101J	Valve Body Cover	00-ON	1	JF506E.GAS02
RUBBER COMPONENTS				
NI	Pump 'O' Ring	00-ON	1	RL4.OR05
Kit	Seal Kit, High Clutch (Precision)	00-ON	1	JF506E.ORK01
METAL CLAD SEALS				
150A	Converter	00-ON	1	JF506E.MCS01
151J	Drive Shaft (L.H. Galaxy)	00-ON	1	JF506E.MCS02
151J	Drive Shaft (L.H. Rover 75)	00-ON	1	JF506E.MCS04
151J	Drive Shaft (L.H. Freelander)	00-ON	1	JF506E.MCS05
151J	Drive Shaft (L.H. Mondeo / Mazda) (56mm x 41mm x 8/13)	00-ON	1	JF506E.MCS06
152J	Drive Shaft (R.H. Galaxy)	00-ON	1	JF506E.MCS03
152J	Drive Shaft (R.H. Rover 75)	00-ON	1	JF506E.MCS04
152J	Drive Shaft (R.H. Freelander)	00-ON	1	JF506E.MCS05
152J	Drive Shaft (R.H. Mondeo / Mazda) (56mm x 41mm x 8/13)	00-ON	1	JF506E.MCS06
152J	Drive Shaft (R.H. AWD Jaguar / Rover) (68mm x 56mm x 7mm)	00-ON	1	JF506E.MCS07
MOULDED PISTONS				
170E	Accumulator Piston (Precision) High Clutch	00-ON	1	JF506E.PIS03
171E	Piston, High Clutch	00-ON	1	JF506E.PIS02
SEALING RINGS				
Kit	Sealing Ring Kit (Transtec)	02-ON	1	JF506E.SRK01
NI	Converter Sealing Washer (Behind Pump Seal)	00-ON	1	JF506E.SSR01
NI	Input Shaft	00-ON	3	JF506E.SSR02
NI	Direct Clutch	00-ON	2	JF506E.SSR03
NI	Low Clutch	00-ON	2	JF506E.SSR04
NI	High/Reverse Clutch	00-ON	3	JF506E.SSR05

ILL NO.	DESCRIPTION	YEARS	QTY	PART NO
FRICTION PLATES				
Kit	Friction Kit	00-ON	1	JF506E.FRK01
Kit	Friction Kit (Alto)	00-ON	1	JF506E.FRK51
Kit	Overdrive Drum Saver Kit (Alto)	00-ON	1	JF506E.CK01
250B	Low Reverse (163mm OD x 1.80mm x 32T) ..	00-ON	7	RL4.FRP29
250B	Low Reverse (Alto) (163mm OD x 1.80mm x 32T) ..	00-ON	7	RL4.FRP79
251B	2nd & 4th Brake (191mm OD x 1.60mm x 32T) ..	00-ON	3	JF506E.FRP03
251B	2nd & 4th Brake (Alto) (191mm OD x 1.60mm x 32T) ..	00-ON	3	JF506E.FRP53
252C	Low Clutch (138mm OD x 1.73mm x 30T) ..	00-ON	7	JF506E.FRP02
252C	Low Clutch (Alto) (138mm OD x 1.73mm x 30T) ..	00-ON	7	JF506E.FRP52
253E	Reverse Clutch (155mm OD x 1.52mm x 32T) ..	00-ON	2	JF506E.FRP04
253E	Reverse Clutch (Alto) (155mm OD x 1.52mm x 32T) ..	00-ON	2	JF506E.FRP54
254E	High Clutch (112mm OD x 1.60mm x 24T) ..	00-ON	5	RL4.FRP23
254E	High Clutch (Alto) (112mm OD x 1.60mm x 24T) ..	00-ON	5	RL4.FRP73
255G	Direct Clutch (102mm OD x 1.73mm x 24T) ..	00-ON	4	JF506E.FRP01
255G	Direct Clutch (Alto) (102mm OD x 1.73mm x 24T) ..	00-ON	4	JF506E.FRP51
STEEL PLATES				
Kit	Steel Plate Kit	00-ON	1	JF506E.STK01
Kit	Overdrive Drum Saver Kit (Alto)	00-ON	1	JF506E.CK01
300B	Low Reverse (150mm ID x 1.4mm x 10T)	00-ON	7	JF506E.STP05
302C	Low Clutch (123mm ID x 1.40mm x 32T)	00-ON	7	JF506E.STP02
301B	2nd & 4th Brake (170mm ID x 3.00mm x 7T)	00-ON	3	JF506E.STP03
303E	Reverse Clutch (142mm ID x 2.00mm x 36T)	00-ON	2	JF506E.STP04
304E	High Clutch (91.50mm ID x 2.40mm x 18T) ..	00-ON	5	JF506E.STP06
304E	High Clutch (91.50mm ID x 1.60mm x 18T) ..	00-ON	5	JF506E.STP07
305G	Direct Clutch (86mm ID x 2.00mm x 24T)	00-ON	4	JF506E.STP01
PRESSURE PLATES				
403D	Reverse Clutch (142mm ID x 36T) (3.60mm Thick)	00-ON	AR	JF506E.PP01
	(3.80mm Thick)	00-ON	AR	JF506E.PP02
	(4.00mm Thick)	00-ON	AR	JF506E.PP03
	(4.20mm Thick)	00-ON	AR	JF506E.PP04
404E	High Clutch (91.50mm ID x 18T) (3.00mm Thick)	00-ON	AR	JF506E.PP05
	(3.02mm Thick)	00-ON	AR	JF506E.PP06
	(3.04mm Thick)	00-ON	AR	JF506E.PP07
	(3.06mm Thick)	00-ON	AR	JF506E.PP08

(Jaguar, Rover, Land Rover, Ford, Mazda, VW & Seat) **JATCO JF506E** 5 SPEED FWD (Electronic Control)

ILL NO.	DESCRIPTION	YEARS	QTY	PART NO
SPRINGS & CIRCLIPS				
438D	Circlip, Reverse Clutch	00-ON	1	JF506E.CIR01
449J	Circlip, Servo Cover (2nd Type).....	00-ON	1	JF506E.CIR02
FILTERS				
450J	Pick Up Filter (Galaxy) (OEM)	4/00-ON	1	JF506E.FIL01
450J	Pick Up Filter (Galaxy) (Aftermarket).....	4/00-ON	1	JF506E.FIL11
450J	Pick Up Filter (Rover 75, Freelander, Mazda & Mondeo) (OEM)	02/02-ON	1	JF506E.FIL02
450J	Pick Up Filter (Rover 75, Freelander, Mazda & Mondeo) (Aftermarket).....	02/02-ON	1	JF506E.FIL12
450J	Pick Up Filter (Golf/Bora Audi A3) (OEM)	99-ON	1	JF506E.FIL03
450J	Pick Up Filter (Golf/Bora Audi A3) (Aftermarket).....	99-ON	1	JF506E.FIL13
BANDS				
500H	Reduction Brake Band (Jaguar, Rover, VW & Mazda) ..	00-ON	1	JF506E.BAN01
500H	Reduction Brake Band (Ford)...	00-ON	1	JF506E.BAN02
BUSHINGS				
THRUST WASHERS & BEARINGS				
Kit	Bearing Kit (Mazda)	00-ON	1	JF506E.TWK01
Kit	Bearing Kit (Ford)	00-ON	1	JF506E.TWK02
610J	Conical Washer, Differential Drive Shaft.....	00-ON	1	JF506E.THW01
ELECTRICAL COMPONENTS				
Kit	Solenoid Kit (Jaguar/Rover).....	00-ON	1	JF506E.SOL20
Kit	Solenoid Kit (Mazda)	00-ON	1	JF506E.SOL21
700J	Line Pressure Duty Solenoid (Galaxy/Sharan).....	00-ON	1	JF506E.SOL09
701J	Shift Solenoid 'B' (Galaxy/Sharan).....	00-ON	1	JF506E.SOL01
702J	Shift Solenoid 'C' (Galaxy/Sharan).....	00-ON	1	JF506E.SOL02
703J	Low Clutch Timing Sol Valve (Galaxy/Sharan).....	00-ON	1	JF506E.SOL04
704J	Shift Solenoid 'A' (Galaxy/Sharan).....	00-ON	1	JF506E.SOL03
705J	Reduction Timing Solenoid (Galaxy/Sharan).....	00-ON	1	JF506E.SOL08
706J	Lock Up Solenoid Valve (Galaxy/Sharan).....	00-ON	1	JF506E.SOL06
707J	2-4 Brake Timing Solenoid (Galaxy/Sharan).....	00-ON	1	JF506E.SOL05
708J	2-4 Brake Duty Solenoid Valve (Galaxy/Sharan).....	00-ON	1	JF506E.SOL07
709J	Range Switch (Galaxy/Sharan)	00-ON	1	JF506E.ELE01
709J	Range Switch (Rover 75 V6 2500cc).....	99-ON	1	JF506E.ELE02

ILL NO.	DESCRIPTION	YEARS	QTY	PART NO
ELECTRICAL COMPONENTS Cont...				
709J	Range Switch (Rover 45 V6 2000cc).....	00-ON	1	JF506E.ELE03
710J	Intermediate Speed Sensor	00-ON	1	JF506E.ELE04
711J	Vehicle Speed Sensor	00-ON	1	JF506E.ELE04
712J	Turbine Speed Sensor	00-ON	1	JF506E.ELE04
713J	Solenoid Wiring Loom (Mondeo)	2/02-ON	1	JF506E.ELE05
713J	Solenoid Wiring Loom (Galaxy / Sharan).....	00-ON	1	JF506E.ELE07
714J	Internal Speed Sensor Loom (Galaxy / Sharan).....	00-ON	1	JF506E.ELE08
NI	Case Loom (Galaxy / Sharan) ..	00-ON	1	JF506E.ELE06
VALVE BODY PARTS				
HARD PARTS				
821E	Reverse Clutch Piston	00-ON	1	JF506E.PIS01
822E	Drum, High & Reverse.....	00-ON	1	JF506E.DRU01
870J	Servo Cover, Aluminium (2nd Type).....	00-ON	1	JF506E.SER01
SPECIAL ITEMS				
900J	Oil Cooler Assy (Galaxy).....	00-ON	1	JF506E.COOL01
TOOLS & MANUALS				
NI	Mazda JA5A-EL Repair Manual (OEM)	00-ON		JF506E.MAN01
TORQUE CONVERTERS				
SOLENOID IDENTIFICATION				
No.	Colour	Description	VW/Audi Designation	
700	Green	Line Pressure	N93	
701	Brown	Shift Sol 'B'	N89	
702	Green	Shift Sol 'C'	N92	
703	Black	Low Clutch Timing	N90	
704	Brown	Shift Sol 'A'	N88	
705	White	Reduction Timing	N281	
706	Black	Lock Up	N91	
707	Black	2-4 Brake Timing	N282	
708	White	2-4 Brake Duty	N283	